

ශ්‍රී ලංකා ප්‍රජාතාන්ත්‍රික සමාජවාදී ජනරජයේ ගැසට් පත්‍රය  
අති විශේෂ

The Gazette of the Democratic Socialist Republic of Sri Lanka

EXTRAORDINARY

අංක 1777/40 - 2012 සැප්තැම්බර් 28 වැනි සිකුරාදා - 2012.09.28  
No. 1777/40 - FRIDAY, SEPTEMBER 28, 2012

(Published by Authority)

PART I : SECTION (I) — GENERAL

Government Notifications

CIVIL AVIATION ACT, No. 14 OF 2010

ORDER issued by the Minister of Civil Aviation by virtue of the powers vested in him under Section 23 Sub Section 1 of the Civil Aviation Act, No. 14 of 2010.

PIYANKARA JAYARATNE,  
Minister of Civil Aviation.

26th September, 2012.

Order

(1) This order shall be cited as Hambantota International Airport Protected Area Order No. 01 of 2012.

(2) Each area of land within the bounds specified in the schedule hereto is declared to be Protected Area under Section 23 subsection 1 (c) of the aforementioned Act.

(3) Any construction of a building or erection of any other structure or making of any alternations to any existing building or other structures within the protected area shall conform to the requirements to be specified by the Director General of Civil Aviation.

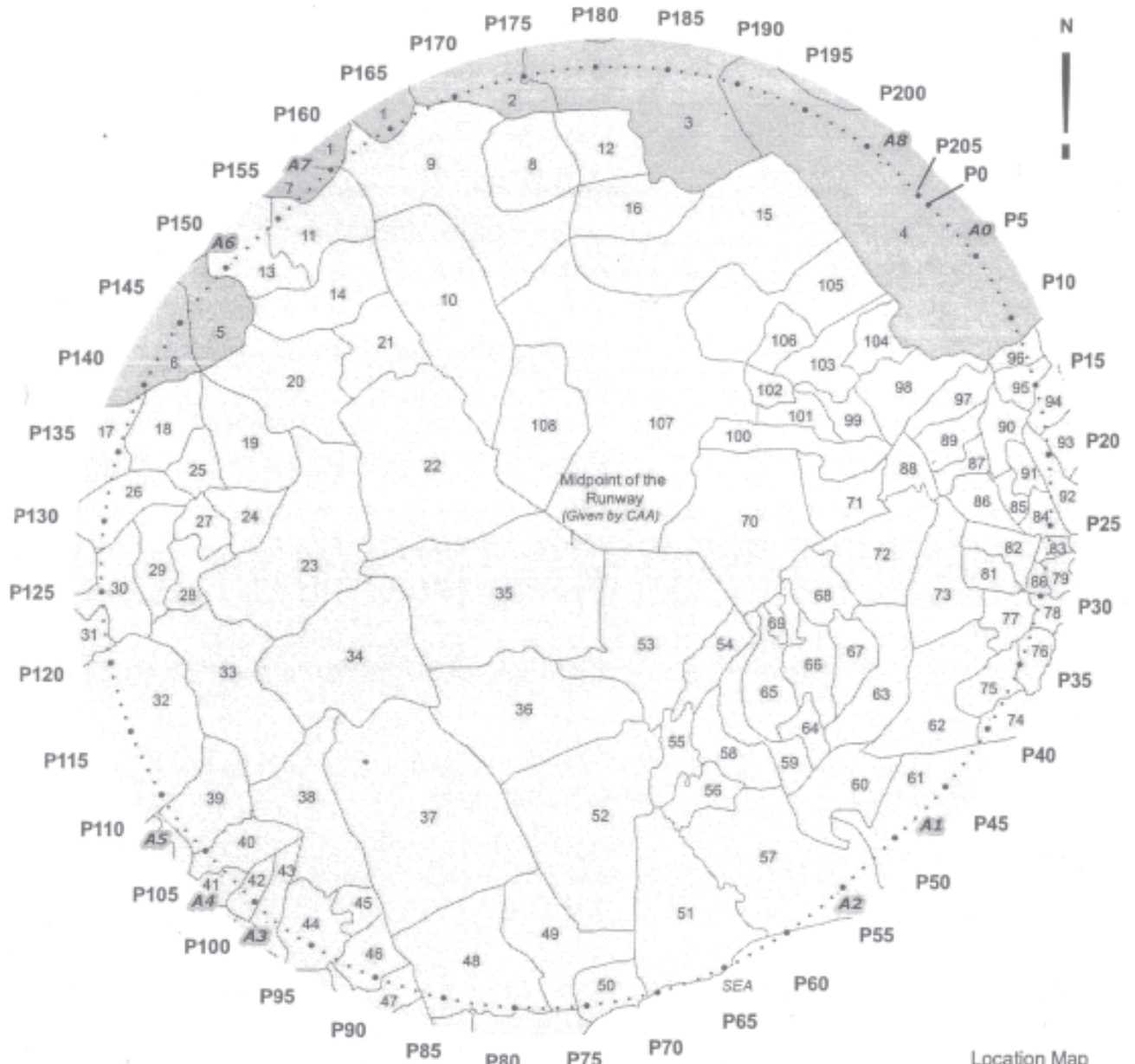
SCHEDULE

Area of land bounded by the line segments joining the geographical coordinates of each adjacent point from points P1 to P205 sitting on the perimeter of a Polygon consists of 2 acrs drawn from A7 to A8 and A0 to A1 with a radius of 15146.3m centred on the point at which the centreline of the runway intersects the notherneastern threshold of the runway at HIA and 2 acrs drawn from A2 to A3 and A5 to A6 with a radius of 15146.3m centered on the point at which the centerline of the runway intersects the southwestern threshold of the runway at HIA and two straight lines from A1 to A2 and A6 to A7 drawn parallel and equal in length to the runway and the two lines joining A8 to A0 and A3 to A5 which are 4500 meters in length each and perpendicular to the extended runway centerline. The area of land belonging to the protected area is given in Annex 1. The list of geographical coordinates represented by the points P1 to P205 and special points A0 to A8 along the perimeter of the above polygon is given in Annex 2.

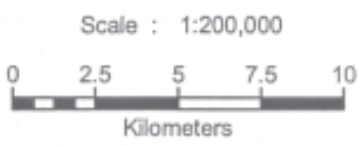
2A

I කොටස : (I) ඡේදය - ශ්‍රී ලංකා ප්‍රජාතාන්ත්‍රික සමාජවාදී ජනරජයේ අතිවිශේෂ ගැසට් පත්‍රය - 2012.09.28

PART I : SEC. (I) - GAZETTE EXTRAORDINARY OF THE DEMOCRATIC SOCIALIST REPUBLIC OF SRI LANKA - 28.09.2012



- Legend**
- Hambantota District
  - Moneragala District
  - 25 G.N. Division boundary / Index No ( 1 - 108 ) (See Annex\_1)
  - Index Point ( P0 - P205 ) (See Annex\_2)
  - Intermediate Point (See Annex\_2)
  - Special Point ( A0 - A8 ) (See Annex\_2)

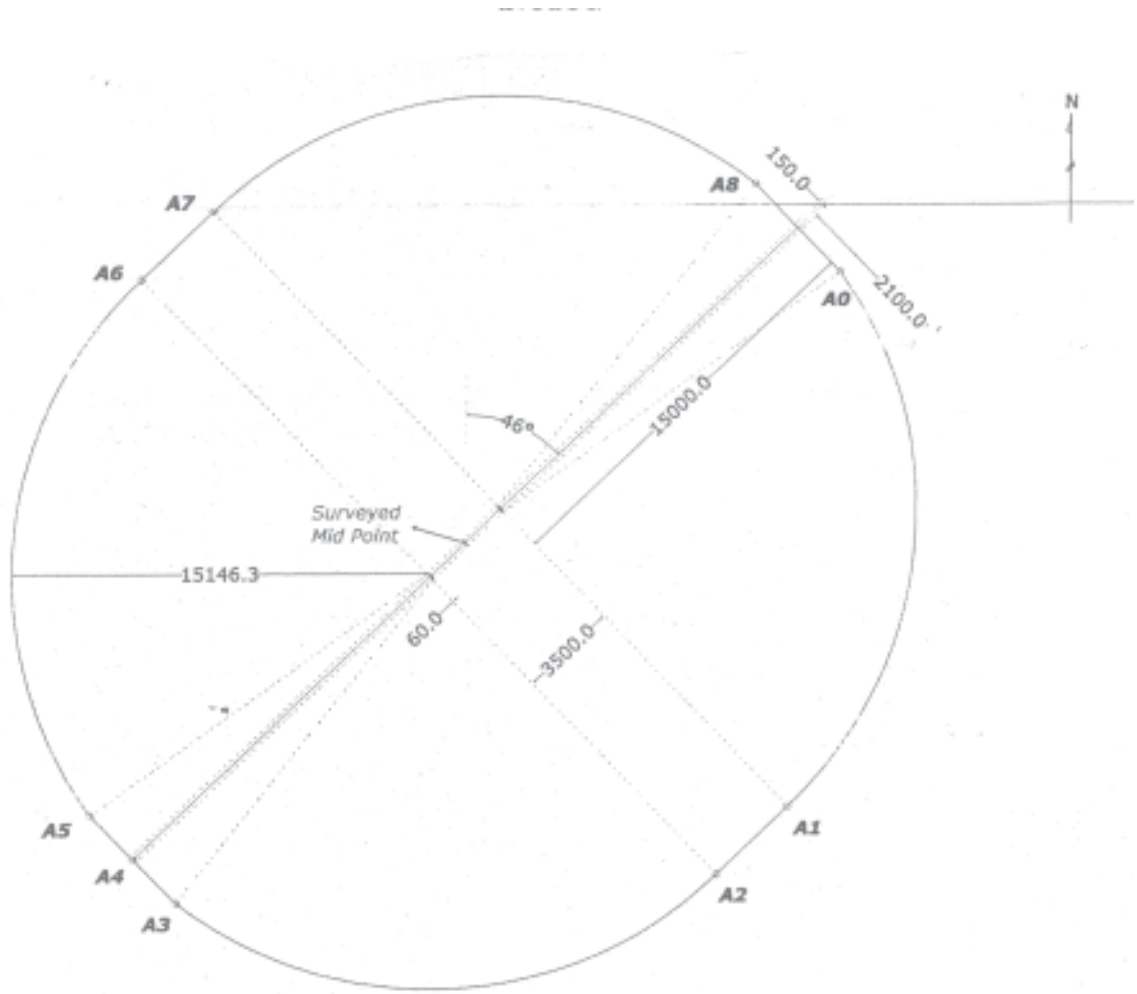


P0 - P205 : 500m intervals of points along the circumference of the given area

[Prepared by Center for Remote Sensing, Survey Department, Sri Lanka]



Boundary of the protected area of Hambantota International Airport



## Annex 1

<i>Index No.</i>	<i>Province</i>	<i>District</i>	<i>D.S. Division</i>	<i>G.N. Division</i>	<i>G.N. No.</i>
1	Uva	Moneragala	Thanamalwila	Nikawewa	147B
2	Uva	Moneragala	Thanamalwila	Bodagama	147D
3	Uva	Moneragala	Thanamalwila	Sittarama	147
4	Uva	Moneragala	Thanamalwila	Seenukkuwa	147A
5	Uva	Moneragala	Sewanagala	Nugegalayaya	149F/1
6	Uva	Moneragala	Sewanagala	Habarugala	149F
7	Uva	Moneragala	Thanamalwila	Sooriyaara	148
8	Southern	Hambantota	Lunugamvehera	Veheragala	46
9	Southern	Hambantota	Lunugamvehera	Angunakolawewa	45
10	Southern	Hambantota	Lunugamvehera	Maha Aluth Gam Ara	47
11	Southern	Hambantota	Sooriyawewa	Mahagalwewa	101
12	Southern	Hambantota	Lunugamvehera	Ranawarnawa	55
13	Southern	Hambantota	Sooriyawewa	Ihala Kumbukwewa	100
14	Southern	Hambantota	Sooriyawewa	Meegaha Jadura	102
15	Southern	Hambantota	Lunugamvehera	Bogahawewa	54
16	Southern	Hambantota	Lunugamvehera	Dewramvehera	53
17	Southern	Hambantota	Sooriyawewa	Weeriyagama	115
18	Southern	Hambantota	Sooriyawewa	Samajasewapura	105
19	Southern	Hambantota	Sooriyawewa	Suravirugama	104
20	Southern	Hambantota	Sooriyawewa	Weliwewa	98
21	Southern	Hambantota	Sooriyawewa	Ranmuduwewa	99
22	Southern	Hambantota	Hambantota	Elalla	97
23	Southern	Hambantota	Sooriyawewa	Andarawewa	109
24	Southern	Hambantota	Sooriyawewa	Mahawelikada Ara	111
25	Southern	Hambantota	Sooriyawewa	Sooriyawewa Town	103
26	Southern	Hambantota	Sooriyawewa	Aliolu Ara	113
27	Southern	Hambantota	Sooriyawewa	Beddewewa	112
28	Southern	Hambantota	Sooriyawewa	Namadagaswewa	110
29	Southern	Hambantota	Sooriyawewa	Viharagala	106
30	Southern	Hambantota	Sooriyawewa	Mahapelessa	107
31	Southern	Hambantota	Sooriyawewa	Bediganthota	132
32	Southern	Hambantota	Ambalantota	Liyangasthota	133
33	Southern	Hambantota	Sooriyawewa	Habarattawala	137
34	Southern	Hambantota	Sooriyawewa	Wediwewa	136
35	Southern	Hambantota	Hambantota	Ketenwewa	96
36	Southern	Hambantota	Hambantota	Gonnoruwa	95
37	Southern	Hambantota	Hambantota	Bellagaswewa	120
38	Southern	Hambantota	Hambantota	Galwewa	118
39	Southern	Hambantota	Ambalantota	Godakoggala	138
40	Southern	Hambantota	Ambalantota	Koggalla	134
41	Southern	Hambantota	Ambalantota	Modara Piliwala	135
42	Southern	Hambantota	Hambantota	Siyambalagasvila North	116
43	Southern	Hambantota	Hambantota	Siyambalagasvila South	117
44	Southern	Hambantota	Hambantota	Udaberagama	119
45	Southern	Hambantota	Hambantota	Arawanamulla	122
46	Southern	Hambantota	Hambantota	Pahala Beragama	121
47	Southern	Hambantota	Hambantota	Manajjawa	128
48	Southern	Hambantota	Hambantota	Samodagama	92
49	Southern	Hambantota	Hambantota	Siribopura	90

<i>Index No.</i>	<i>Province</i>	<i>District</i>	<i>D.S. Division</i>	<i>G.N. Division</i>	<i>G.N. No.</i>
50	Southern	Hambantota	Hambantota	Hambantota East	93
51	Southern	Hambantota	Hambantota	Koholankala	89
52	Southern	Hambantota	Hambantota	Keliyapura	91
53	Southern	Hambantota	Hambantota	Tammennawa	86
54	Southern	Hambantota	Hambantota	Badagiriya	85
55	Southern	Hambantota	Hambantota	Yahangala West	87
56	Southern	Hambantota	Hambantota	Joolgamuwa	84
57	Southern	Hambantota	Hambantota	Pallemalala	83
58	Southern	Hambantota	Hambantota	Yahangala East	88
59	Southern	Hambantota	Lunugamvehera	Rambukwewa	79
60	Southern	Hambantota	Lunugamvehera	Weligatta	78
61	Southern	Hambantota	Hambantota	Bundala	81
62	Southern	Hambantota	Tissamaharama	Gonagamuwa	28
63	Southern	Hambantota	Lunugamvehera	Weeravila	66
64	Southern	Hambantota	Lunugamvehera	Keerthipura	80
65	Southern	Hambantota	Lunugamvehera	Rambukwewa	79
66	Southern	Hambantota	Lunugamvehera	Samanpura	68
67	Southern	Hambantota	Lunugamvehera	Ranasiripura	67
68	Southern	Hambantota	Lunugamvehera	Senapura	65
69	Southern	Hambantota	Lunugamvehera	Karambawewa	69
70	Southern	Hambantota	Lunugamvehera	Mihindupura	63
71	Southern	Hambantota	Lunugamvehera	Abhayapura	62
72	Southern	Hambantota	Lunugamvehera	Singhapura	64
73	Southern	Hambantota	Tissamaharama	Uduvila	35
74	Southern	Hambantota	Tissamaharama	Ekamuthugama	24
75	Southern	Hambantota	Tissamaharama	Sangungama	26
76	Southern	Hambantota	Tissamaharama	Gemunupura	27
77	Southern	Hambantota	Tissamaharama	Tissapura	25
78	Southern	Hambantota	Tissamaharama	Pannagamuwa	7
79	Southern	Hambantota	Tissamaharama	Andaragasyaya	5
80	Southern	Hambantota	Tissamaharama	Nedigamvila	6
81	Southern	Hambantota	Tissamaharama	Saliyapura	34
82	Southern	Hambantota	Tissamaharama	Wijayapura	36
83	Southern	Hambantota	Tissamaharama	Magama	2
84	Southern	Hambantota	Tissamaharama	Yodhakandiya	37
85	Southern	Hambantota	Tissamaharama	Gotabhayapura	12
86	Southern	Hambantota	Tissamaharama	Mahasenpura	33
87	Southern	Hambantota	Tissamaharama	Sandagirpura	30
88	Southern	Hambantota	Tissamaharama	Rathnelumwalayaya	29
89	Southern	Hambantota	Tissamaharama	Shuddha Nagaraya	31
90	Southern	Hambantota	Tissamaharama	Senapura	40
91	Southern	Hambantota	Tissamaharama	Rana Keliya	41
92	Southern	Hambantota	Tissamaharama	Welipothewala	39
93	Southern	Hambantota	Lunugamvehera	Jayagama	72
94	Southern	Hambantota	Lunugamvehera	Dutugemunupura	71
95	Southern	Hambantota	Lunugamvehera	Parakramapura	74
96	Southern	Hambantota	Lunugamvehera	Beralihela	73
97	Southern	Hambantota	Tissamaharama	Rubberwatta	32
98	Southern	Hambantota	Lunugamvehera	Kendagasmankada	58
99	Southern	Hambantota	Lunugamvehera	Mahanagapura	59

<i>Index No.</i>	<i>Province</i>	<i>District</i>	<i>D.S. Division</i>	<i>G.N. Division</i>	<i>G.N. No.</i>
100	Southern	Hambantota	Lunugamvehera	Ittanwekada	61
101	Southern	Hambantota	Lunugamvehera	Muwanwewa	60
102	Southern	Hambantota	Lunugamvehera	Weeravil Ara	50
103	Southern	Hambantota	Lunugamvehera	Lunugamvehera New Town	56
104	Southern	Hambantota	Lunugamvehera	Seenimunna	57
105	Southern	Hambantota	Lunugamvehera	Padavigama	51
106	Southern	Hambantota	Lunugamvehera	Punchiappujandura	52
107	Southern	Hambantota	Lunugamvehera	Mattala	48
108	Southern	Hambantota	Lunugamvehera	Pahala Mattala	49

## Annex 2

List of Co-ordinates of 500m intervals of points along the boundary of the area

<i>Point-ID</i>	<i>National Coordinate System (SLD 95)</i>		<i>Geographic Coordinate System (WGS 84)</i>	
	<i>SLD 95-X</i>	<i>SLD 95-Y</i>	<i>WGS 84-Lat</i>	<i>WGS 84-Lon</i>
<b>P 0</b>	<b>250860.870</b>	<b>132478.087</b>	<b>6°23' 23.95'' N</b>	<b>81°14'0.54'' E</b>
P 1	251208.199	132118.417	6°23' 12.23'' N	81°14'11.82'' E
P 2	252555.528	131758.747	6°23' 00.51'' N	81°14'23.11'' E
P 3	251902.858	131399.078	6°22' 48'8'' N	81°14'34'4'' E
P 4	252250.187	131039.408	6°22' 37.08'' N	81°14'45.72'' E
<b>P 5</b>	<b>252569.230</b>	<b>130656.192</b>	<b>6°22' 24.59'' N</b>	<b>81°14'56.07'' E</b>
P 6	252849.818	130242.371	6°22' 11.11'' N	81°15'5.19'' E
P 7	253116.595	129819.515	6°21' 57'34'' N	81°15'13.87'' E
P 8	253369.271	129388.085	6°21' 43'28'' N	81°15'22.08'' E
P 9	253607.569	128948.549	6°21' 28.97'' N	81°15'29.8'' E
<b>P 10</b>	<b>253831.230</b>	<b>128501.388</b>	<b>6°21' 14.4'' N</b>	<b>81°15'37'08'' E</b>
P 11	254040.010	128047.089	6°20' 59.61'' N	81°15'43.86'' E
P 12	254233.683	127586.146	6°20' 44.59'' N	81°15'50.15'' E
P 13	254412.036	127119.062	6°20' 29.38'' N	81°15'55.92'' E
P 14	254574.876	126646.346	6°20' 13.99'' N	81°16'1.22'' E
<b>P 15</b>	<b>254722.025</b>	<b>126168.388</b>	<b>6°19' 58.43'' N</b>	<b>81°16'6'' E</b>
P 16	254853.323	125686.084	6°19' 42.72'' N	81°16'10.26'' E
P 17	254968.627	125199.583	6°19' 26.88'' N	81°16'13.99'' E
P 18	255067.810	124709.543	6°19' 10.92'' N	81°16'17.21'' E
P 19	255150.766	124216.495	6°18' 54.87'' N	81°16'19.87'' E
<b>P 20</b>	<b>255217.403</b>	<b>123720.979</b>	<b>6°18' 38.73'' N</b>	<b>81°16'22'04'' E</b>
P 21	255267.649	123233.533	6°18' 22.54'' N	81°16'23.66'' E
P 22	255301.449	122724.699	6°18' 6.3'' N	81°16'24.73'' E
P 23	255318.767	122225.022	6°17' 50.03'' N	81°16'25.28'' E
P 24	255319.583	121725.045	6°17' 33.75'' N	81°16'25.28'' E
<b>P 25</b>	<b>255303.897</b>	<b>121225.314</b>	<b>6°17' 17.48'' N</b>	<b>81°16'24.76'' E</b>
P 26	255271.726	120726.373	6°17' 1.24'' N	81°16'23.72'' E
P 27	255223.104	120228.765	6°16' 45.04'' N	81°16'22.1'' E
P 28	255158.085	119733.034	6°16' 28.91'' N	81°16'19.98'' E
P 29	255076.740	119239.718	6°16' 12.85'' N	81°16'17.32'' E
<b>P 30</b>	<b>254979.157</b>	<b>118749.356</b>	<b>6°15' 56.89'' N</b>	<b>81°16'14.13'' E</b>

Point-ID	National Coordinate System (SLD 95)		Geographic Coordinate System (WGS 84)	
	SLD 95-X	SLD 95-Y	WGS 84-Lat	WGS 84-Lon
P 31	254865.442	118262.482	6°15'41.04"N	81°16'10.42"E
P 32	254735.720	117779.627	6°15'25.33"N	81°16'6.17"E
P 33	254590.132	117301.316	6°15'9.76"N	81°16'1.41"E
P 34	254428.836	116828.070	6°14'54.36"N	81°15'56.17"E
<b>P 35</b>	<b>254252.009</b>	<b>116360.407</b>	<b>6°14'39.14"N</b>	<b>81°15'50.4"E</b>
P 36	254059.842	115898.834	6°14'24.12"N	81°15'44.14"E
P 37	253852.546	115443.855	6°14'9.31"N	81°15'37.38"E
P 38	253630.346	114995.967	6°13'54.74"N	81°15'30.13"E
P 39	253393.484	114555.656	6°13'40.41"N	81°15'22.41"E
<b>P 40</b>	<b>253142.219</b>	<b>114123.402</b>	<b>6°13'26.35"N</b>	<b>81°15'14.32"E</b>
P 41	252876.824	113699.677	6°13'12.56"N	81°15'5.58"E
P 42	253597.588	113284.943	6°12'59.07"N	81°14'56.48"E
P 43	252304.816	112879.650	6°12'45.88"N	81°14'46.95"E
P 44	251998.827	112484.242	6°12'33'02"N	81°14'36.98"E
<b>P 45</b>	<b>251679.953</b>	<b>112099.148</b>	<b>6°12'20'49"N</b>	<b>81°14'26.6"E</b>
P 46	251348.544	111724.789	6°12'8.31"N	81°14'15'81"E
P 47	251004.959	111361.572	6°11'56.5"N	81°14'4.63"E
P 48	250649.670	111009.793	6°11'45.05"N	81°13'53.04"E
P 49	250290.000	110662.463	6°11'33.76"N	81°13'41.34"E
<b>P 50</b>	<b>249930.330</b>	<b>110315.134</b>	<b>6°11'22.46"N</b>	<b>81°13'29.64"E</b>
P 51	249570.660	109967.805	6°11'11.16"N	81°13'17.91"E
P 52	249210.990	109620.476	6°10'59.86"N	81°13'6'21"E
P 53	248851.320	109273.147	6°10'48.57"N	81°12'54.51"E
P 54	248491.650	108925.817	6°10'37.27"N	81°12'42.78"E
<b>P 55</b>	<b>248131.980</b>	<b>108578.488</b>	<b>6°10'25.97"N</b>	<b>81°12'31.08"E</b>
P 56	247767.815	108235.907	6°10'14.83"N	81°12'19.22"E
P 57	247392.607	107905.457	6°10'4.08"N	81°12'7.02"E
P 58	247006.698	107587.572	6°9'53.74"N	81°11'54'44"E
P 59	246610.506	107282.597	6°9'43.82"N	81°11'41.56"E
<b>P 60</b>	<b>246204.465</b>	<b>106990.865</b>	<b>6°9'34.33"N</b>	<b>81°11'28.35"E</b>
P 61	245789.016	106712.693	6°9'25.29"N	81°11'14.84"E
P 62	245364.613	106448.384	6°9'16.7"N	81°11'1.02"E
P 63	244931.717	106198.228	6°9'8.56"N	81°10'46.93"E
P 64	244490.800	105962.495	6°9'0.9"N	81°10'32.57"E
<b>P 65</b>	<b>244042.343</b>	<b>105741.444</b>	<b>6°8'53.71"N</b>	<b>81°10'17.98"E</b>
P 66	243586.835	105535.314	6°8'47.01"N	81°10'3.15"E
P 67	243124.771	105344.331	6°8'40.81"N	81°9'4'8'13"E
P 68	242656.656	105168.703	6°8'35.1"N	81°9'32.91"E
P 69	242182.999	105008.620	6°8'29.9"N	81°9'17.47"E
<b>P 70</b>	<b>241704.317</b>	<b>104864.258</b>	<b>6°8'25.21"N</b>	<b>81°9'1.9"E</b>
P 71	241221.130	104735.774	6°8'21.04"N	81°8'46.19"E
P 72	240733.966	104623.308	6°8'17.39"N	81°8'30.34"E
P 73	240243.356	104526.982	6°8'14.26"N	81°8'14'38"E
P 74	239749.833	104446.901	6°8'11.67"N	81°7'58.32"E
<b>P 75</b>	<b>239253.937</b>	<b>104383.153</b>	<b>6°8'9.6"N</b>	<b>81°7'42.19"E</b>
P 76	238756.206	104335.807	6°8'8.07"N	81°7'26.02"E
P 77	238257.184	104304.914	6°8'7.08"N	81°7'9.79"E
P 78	237757.415	104290.508	6°8'6.62"N	81°6'53.53"E
P 79	237257.442	104292.606	6°8'6.7"N	81°6'37.27"E
<b>P 80</b>	<b>236757.810</b>	<b>104311.204</b>	<b>6°8'7.31"N</b>	<b>81°6'21.01"E</b>

Point-ID	National Coordinate System (SLD 95)		Geographic Coordinate System (WGS 84)	
	SLD 95-X	SLD 95-Y	WGS 84-Lat	WGS 84-Lon
P 81	236259.065	104346.283	6°8'8.47"N	81°6'4.77"E
P 82	235761.750	104397.803	6°8'10.15"N	81°5'48.6"E
P 83	235266.405	104465.710	6°8'12.37"N	81°5'32.5"E
P 84	234773.572	104549.929	6°8'15'22"N	81°5'16.46"E
<b>P 85</b>	<b>234283.787</b>	<b>104650.368</b>	<b>6°8'18.4"N</b>	<b>81°5'0'35"E</b>
P 86	233797.584	104766.918	6°8'22.21"N	81°4'44.74"E
P 87	233315.493	104899.452	6°8'26.53"N	81°4'29.06"E
P 88	232838.038	105047.825	6°8'31.37"N	81°4'13.51"E
P 89	232365.741	105211.876	6°8'36.72"N	81°3'58.16"E
P 90	231899.116	105391.426	6°8'42.57"N	81°3'42.99"E
P 91	231438.671	105586.279	6°8'48.92"N	81°3'28.03"E
P 92	230984.908	105796.223	6°8'55.77"N	81°3'13.25"E
P 93	230538.322	106021.029	6°9'3.09"N	81°2'58.75"E
P 94	230099.399	106260.453	6°9'10.9"N	81°2'44.47"E
<b>P 95</b>	<b>229668.617</b>	<b>106514.233</b>	<b>6°9'19.16"N</b>	<b>81°2'30.46"E</b>
P 96	229246.446	106782.093	6°9'27.89"N	81°2'16.72"E
P 97	228833.346	107063.741	6°9'37.07N	81°2'3.29"E
P 98	228429.766	107358.870	6°9'46.68"N	81°1'50'17"E
P 99	228058.959	107692.267	6°9'57.54"N	81°1'38.11"E
<b>P 100</b>	<b>227711.630</b>	<b>108051.936</b>	<b>6°10'9.26"N</b>	<b>81°1'26.82"E</b>
P 101	227364.301	108411.606	6°10'20.97"N	81°1'15.53"E
P 102	227016.971	108771.276	6°10'32.69"N	81°1'4.24"E
P 103	226669.642	109130.946	6°10'44.4"N	81°0'52.95"N
P 104	226322.313	109490.616	6°10'56.12"N	81°0'41.64"E
<b>P 105</b>	<b>225974.984</b>	<b>109850.286</b>	<b>6°11'7.83"N</b>	<b>81°0'30.35"E</b>
P 106	225627.655	110209.956	6°11'19.55"N	81°0'19.06"E
P 107	225280.325	110569.626	6°11'31.26"N	81°0'7.77"E
P 108	224962.497	110953.844	6°11'43.77"N	80°59'57.45"E
P 109	224682.185	111367.852	6°11'57.26"N	80°59'48.33"E
<b>P 110</b>	<b>224415.690</b>	<b>111790.886</b>	<b>6°12'11.03"N</b>	<b>80°59'39.65"E</b>
P 111	224163.303	112222.485	6°12'25.09"N	80°59'31'46"E
P 112	223925.299	112662.179	6°12'39.04"N	80°59'23.72"E
P 113	223701.936	113109.490	6°12'53.97"N	80°59'16.47"E
P 114	223493.459	113563.928	6°13'8.77"N	80°59'9.68"E
<b>P 115</b>	<b>223300.094</b>	<b>114025.000</b>	<b>6°13'23.78"N</b>	<b>80°59'3.39"E</b>
P 116	223122.052	114492.203	6°13'38.99"N	80°58'57.06"E
P 117	222959.528	114965.028	6°13'54.39"N	80°58'52.32"E
P 118	222812.698	115442.959	6°14'9.95"N	80°58'47.45"E
P 119	222681.722	115925.476	6°14'25.66"N	80°58'43.29"E
<b>P 120</b>	<b>222566.743</b>	<b>116412.053</b>	<b>6°14'41.5"N</b>	<b>80°58'39.58"E</b>
P 121	222467.887	116902.160	6°14'57.46"N	80°58'36.37"E
P 122	222385.261	117395.262	6°15'13.52"N	80°58'33.67"E
P 123	222318.954	117890.824	6°15'29.16"N	80°58'31.53"E
P 124	222269.040	118388.303	6°15'45.85"N	80°59'29.91"E
<b>P 125</b>	<b>222235.573</b>	<b>118887.159</b>	<b>6°16'2.09"N</b>	<b>80°58'28.81"E</b>
P 126	222218.589	119386.848	6°16'18.36"N	80°58'28.26"E
P 127	222218.107	119886.825	6°16'34.63"N	80°58'28.26"E
P 128	222234.126	120386.545	6°16'50.9"N	80°58'28.79"E
P 129	222266.631	120885.465	6°17'7.14"N	80°58'29.86"E



Point-ID	National Coordinate System (SLD 95)		Geographic Coordinate System (WGS 84)	
	SLD 95-X	SLD 95-Y	WGS 84-Lat	WGS 84-Lon
<b>P 130</b>	<b>222315.585</b>	<b>121383.040</b>	<b>6°17'23.34''N</b>	<b>80°58'31.45''E</b>
P 131	222380.934	121878.728	6°17'39.48''N	80°58'33.59''E
P 132	222462.609	122371.989	6°17'55.54''N	80°58'36.26''E
P 133	222560.519	122862.286	6°18'11.5''N	80°58'39.49''E
P 134	222674.559	123349.084	6°18'27.35''N	80°58'43.15''E
<b>P 135</b>	<b>222804.603</b>	<b>123831.853</b>	<b>6°18'43.06''N</b>	<b>80°58'47.41''E</b>
P 136	222950.511	124310.066	6°18'58.63''N	80°58'52.16''E
P 137	223112.122	124783.204	6°19'14.03''N	80°58'57.43''E
P 138	223289.262	125250.749	6°19'29.25''N	80°59'3.2''E
P 139	223481.736	125712.194	6°19'44.27''N	80°59'9.46''E
<b>P 140</b>	<b>223689.336</b>	<b>126167.034</b>	<b>6°19'59.07''N</b>	<b>80°59'16.22''E</b>
P 141	223911.835	126614.774	6°20'13.65''N	81°59'23.47''E
P 142	224148.991	127054.927	6°20'27.97''N	81°59'31.19''E
P 143	224400.545	127487.013	6°20'42.04''N	81°59'39.37''E
P 144	224666.223	127910.560	6°20'55.82''N	81°59'48.02''E
<b>P 145</b>	<b>224945.735</b>	<b>128325.108</b>	<b>6°21'9.31''N</b>	<b>80°59'57.14''E</b>
P 146	225238.778	128730.205	6°21'22.5''N	81°0'6.67''E
P 147	225545.031	129125.409	6°21'35.36''N	81°0'16.64''E
P 148	225864.161	129510.290	6°21'47.89''N	81°0'27.03''E
P 149	226195.821	129884.428	6°22'0.06''N	81°0'37.85''E
<b>P 150</b>	<b>226539.648</b>	<b>130247.415</b>	<b>6°22'11.87''N</b>	<b>81°0'49.03''E</b>
P 151	226895.140	130598.991	6°22'23.31''N	81°1'0.59''E
P 152	227254.810	130946.320	6°22'34.62''N	81°1'12.32''E
P 153	227614.480	131293.650	6°22'45.92''N	81°1'24.02''E
P 154	227974.149	131640.979	6°22'57.22''N	81°1'35.75''E
<b>P 155</b>	<b>228333.819</b>	<b>131988.308</b>	<b>6°23'8.52''N</b>	<b>81°1'47.45''E</b>
P 156	228693.489	132335.637	6°23'19.82''N	81°1'59.15''E
P 157	229053.159	132682.966	6°23'31.13''N	81°2'10.87''E
P 158	229412.829	133030.296	6°23'42.43''N	81°2'22.58''E
P 159	229777.200	133372.658	6°23'53.57''N	81°2'34.44''E
<b>P 160</b>	<b>230152.628</b>	<b>133702.857</b>	<b>6°24'4.31''N</b>	<b>81°2'46.66''E</b>
P 161	230538.750	134020.484	6°24'14.64''N	81°2'59.24''E
P 162	230935.145	134325.195	6°24'24.56''N	81°3'12.15''E
P 163	231341.380	134616.656	6°24'34.06''N	81°3'25.36''E
P 164	231757.015	134894.551	6°24'43.08''N	81°3'38.9''E
<b>P 165</b>	<b>232181.595</b>	<b>135158.576</b>	<b>6°24'51.67''N</b>	<b>81°3'52.72''E</b>
P 166	232614.658	135408.443	6°24'59.79''N	81°4'6.81''E
P 167	233055.731	135643.881	6°25'7.45''N	81°4'21.17''E
P 168	233504.336	135864.633	6°25'14.63''N	81°4'35.78''E
P 169	233959.982	136070.459	6°25'21.32''N	81°4'50.62''E
<b>P 170</b>	<b>234422.173</b>	<b>136261.133</b>	<b>6°25'27.52''N</b>	<b>81°5'5.67''E</b>
P 171	234890.405	136436.449	6°25'33.31''N	81°5'20.91''E
P 172	235364.169	136596.215	6°25'38.41''N	81°5'36.32''E
P 173	235842.948	136740.258	6°25'43.08''N	81°5'51.92''E
P 174	236326.220	136868.419	6°25'47.25''N	81°6'7.63''E
<b>P 175</b>	<b>236813.459</b>	<b>136980.560</b>	<b>6°25'50.89''N</b>	<b>81°6'23.51''E</b>
P 176	237304.133	137076.559	6°25'54''N	81°6'39.46''E
P 177	237797.709	137156.310	6°25'56.59''N	81°6'55.53''E
P 178	238293.648	137219.727	6°25'58.64''N	81°7'11.68''E

Point-ID	National Coordinate System (SLD 95)		Geographic Coordinate System (WGS 84)	
	SLD 95-X	SLD 95-Y	WGS 84-Lat	WGS 84-Lon
P 179	238791.410	137266.741	6°26'0.16''N	81°07'27.89''E
<b>P 180</b>	<b>239290.452</b>	<b>137297.301</b>	<b>6°26'1.15''N</b>	<b>81°07'44.12''E</b>
P 181	239790.232	137311.373	6°26'1.59''N	81°08'0.38''E
P 182	240290.203	137308.941	6°26'1.5''N	81°08'16.66''E
P 183	240789.822	137290.010	6°26'0.87''N	81°08'32.92''E
P 184	241288.544	137254.598	6°25'59.71''N	81°08'49.16''E
<b>P 185</b>	<b>241785.825</b>	<b>137202.746</b>	<b>6°25'58.01''N</b>	<b>81°09'5.33''E</b>
P 186	242281.124	137134.508	6°25'55.78''N	81°09'21.46''E
P 187	242773.900	137049.960	6°25'53.01''N	81°09'37.47''E
P 188	243263.618	136949.194	6°25'49.72''N	81°09'53.43''E
P 189	243749.743	136832.320	6°25'45.9''N	81°10'9.25''E
<b>P 190</b>	<b>244231.746</b>	<b>136699.464</b>	<b>6°25'41.56''N</b>	<b>81°10'24.93''E</b>
P 191	244709.101	136550.772	6°25'36.71''N	81°10'40.45''E
P 192	245181.289	136386.406	6°25'31.35''N	81°10'55.8''E
P 193	245647.794	136206.545	6°25'25.48''N	81°11'10.99''E
P 194	246108.109	136011.384	6°25'19.11''N	81°11'25.96''E
<b>P 195</b>	<b>246561.732</b>	<b>135801.137</b>	<b>6°25'12.26''N</b>	<b>81°11'40.74''E</b>
P 196	247008.168	135576.033	6°25'4.92''N	81°11'55.24''E
P 197	247446.931	135336.316	6°24'57.1''N	81°12'9.52''E
P 198	247877.543	135082.249	6°24'48.82''N	81°12'23.53''E
P 199	248299.535	134814.107	6°24'40.08''N	81°12'37.26''E
<b>P 200</b>	<b>248712.447</b>	<b>134532.183</b>	<b>6°24'30.89''N</b>	<b>81°12'50.69''E</b>
P 201	249115.830	134236.785	6°24'21.26''N	81°13'3.79''E
P 202	249485.601	133902.220	6°24'10.36''N	81°13'15.82''E
P 203	249832.930	133542.550	6°23'58.64''N	81°13'27.11''E
P 204	250180.259	133182.880	6°23'46.92''N	81°13'38.4''E
<b>P 205</b>	<b>250527.588</b>	<b>132823.211</b>	<b>6°23'35.2''N</b>	<b>81°13'49.69''E</b>

List of Co-ordinates of special points along the boundary of the area

Point-ID	National Coordinate System (SLD 95)		Geographic Coordinate System (WGS 84)	
	SLD 95-X	SLD 95-Y	WGS 84-Lat	WGS 84-Lon
A 0	252423.851	130859.573	6°22'31.22''N	81°14'51.35''E
A 1	250696.467	111054.984	6°11'46.52''N	81°13'54.58''E
A 2	248092.457	108540.321	6°10'24.73''N	81°12'29.79''E
A 3	228239.647	107505.158	6°09'51.45''N	81°1'43.99''E
A 4	226676.666	109123.673	6°10'4.17''N	81°0'53.17''E
A 5	225113.685	110742.187	6°11'36.88''N	81°0'2.36''E
A 6	226841.069	130546.776	6°22'21.61''N	81°0'58.83''E
A 7	229445.079	133061.439	6°23'43.44''N	81°2'23.62''E
A 8	249297.889	134096.602	6°24'16.69''N	81°13'9.72''E